


Table of Contents	
2	NOTES, BLOCK DIAGRAM
3	LOAD BOARD CIRCUIT

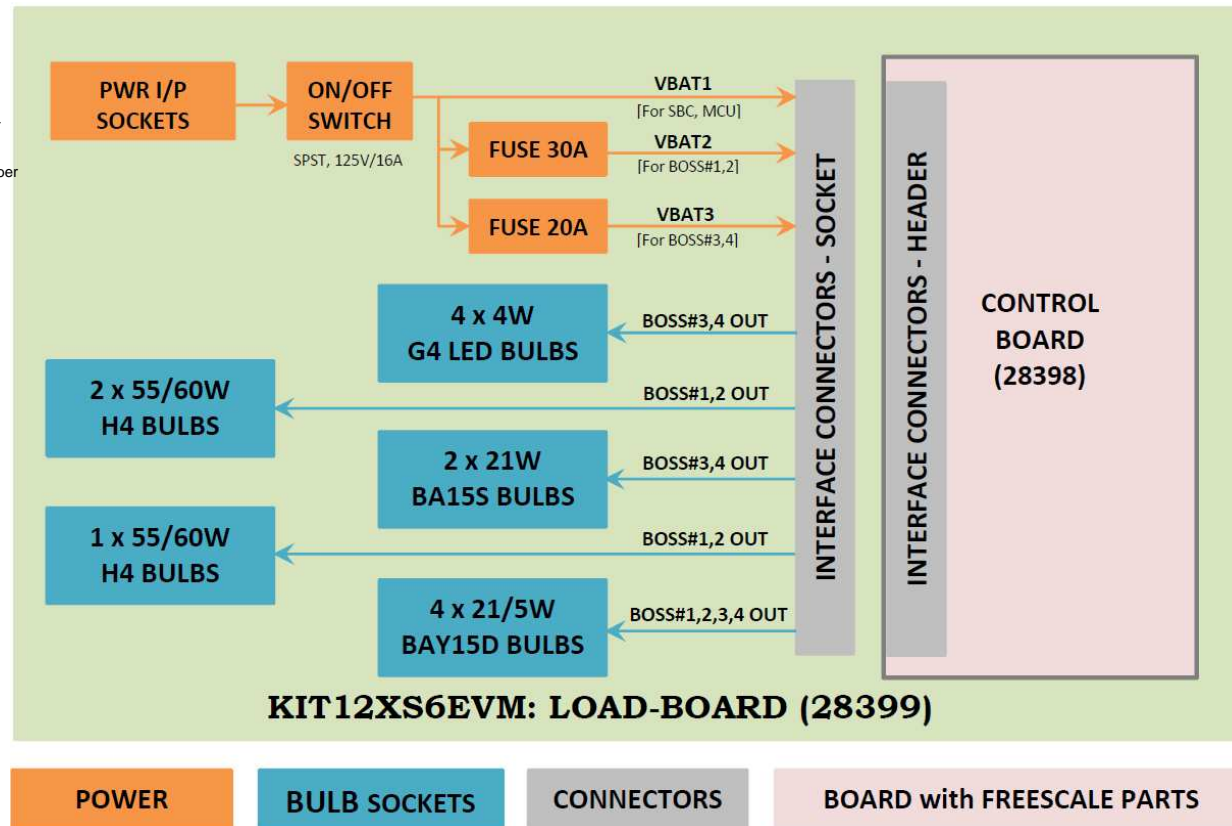
Revisions			
Rev	Description	Date	Approved
X1	Initial Design J3,J4,J5,J9 - Pin Mapping updated A070 Release	08-May-14	Li Jing
A	F1,F2 changed to SUBASSEMBLY Part. BOSS1,2,3,4: OUT1 & OUT2 Swapped Ref, Des. Re-sequencing done A085 Release	22-May-14	Li Jing

KIT12XS6EVM LOAD-BOARD

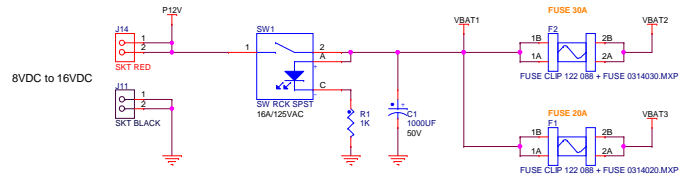
		Automotive Product Group 6501 William Cannon Drive West Austin, TX 78735-8598	
<small>This document contains information proprietary to Freescale and shall not be used for engineering design, procurement or manufacture in whole or in part without the express written permission of Freescale.</small>			
ICAP Classification: FCP: _____ FMO: X PUI: _____			
Designer: P. Balasubramanian	Drawing Title: KIT12XS6EVM_LOAD-BOARD		
Drawn by: P. Balasubramanian	Page Title: TITLE PAGE		
Approved: Li Jing	Size C	Document Number SCH-28399 PDF: SPF-28399	Rev A
Date: Friday, May 23, 2014		Sheet 1 of 3	

NOTES:

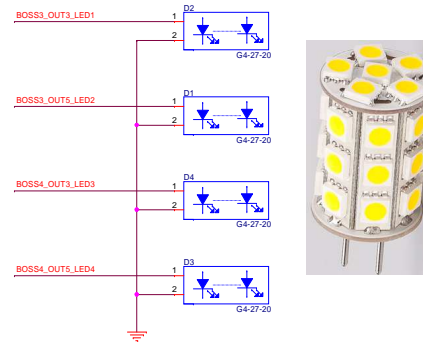
1. Unless Otherwise Specified:
All resistors are in ohms, 5%, 1/8 Watt
All capacitors are in uF, 20%, 50V
All voltages are DC
All polarized capacitors are aluminum electrolytic
2. Interrupted lines coded with the same letter or letter combinations are electrically connected.
3. Device type number is for reference only. The number varies with the manufacturer.
4. Special signal usage:
_B Denotes - Active-Low Signal
<> or [] Denotes - Vectored Signals
5. Interpret diagram in accordance with American National Standards Institute specifications, current revision, with the exception of logic block symbology.



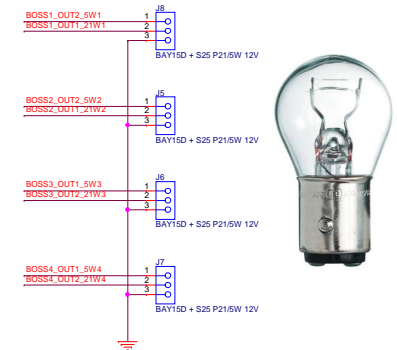
POWER SECTION: ON/OFF, PROTECTION



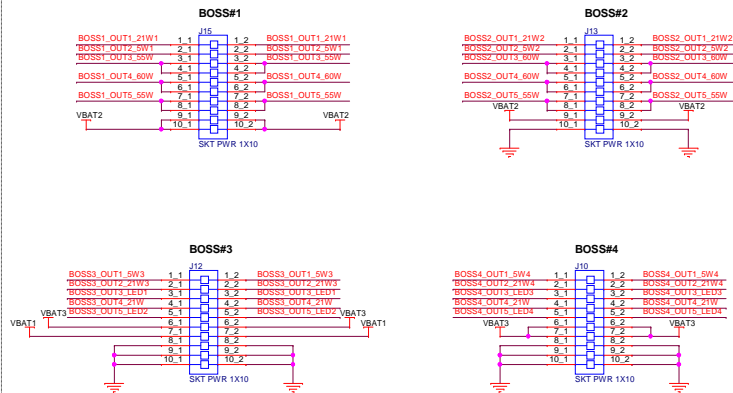
G4 TOWER LEDs: 4 x 4W/12V



INDICATOR LAMPS: 4 x 21/5W,12V BAY15D



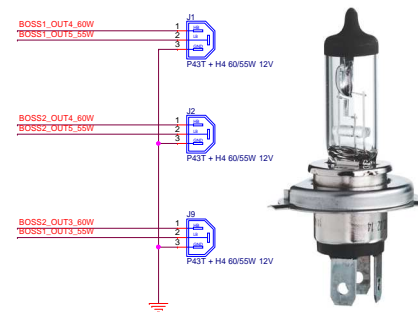
CONNECTOR SOCKETS: INTERFACE TO CONTROL BOARD



NOTE: PIN CONFIGURATION

SOCKET PINOUT MAPPING AS PER CONTROL BOARD DESIGN (SPF-28398)

HEAD LAMPS: 3 X 55/60W, 12V, H4 P43T



NOTE: H4 SOCKET

PIN1 - HIGH BEAM/60W

PIN2 - LOW BEAM/55W

PIN3 - GROUND

INDICATOR LAMPS: 2 x 21W,12V ,BA15S

