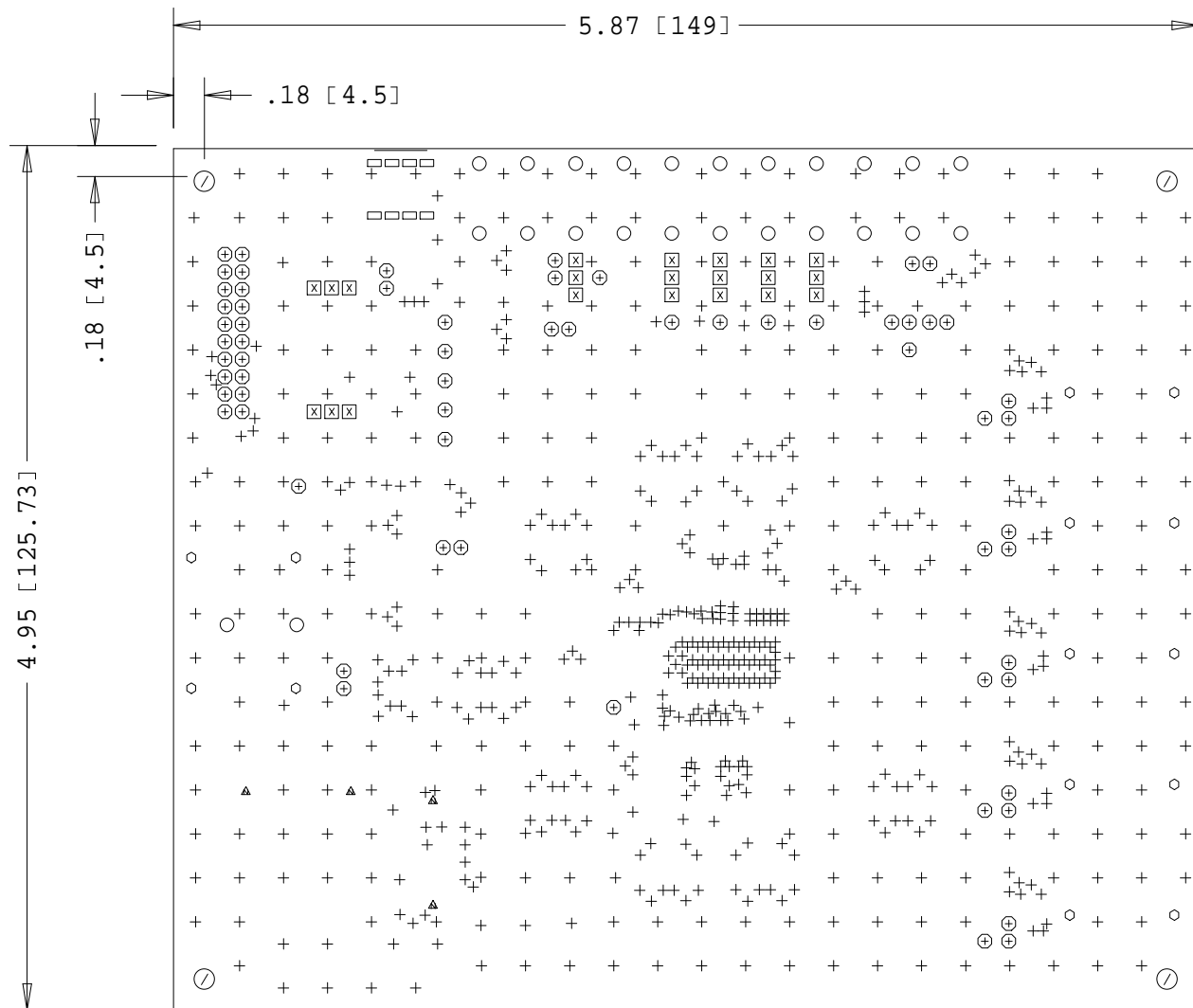





This plan is our property. it will not, without written permission, be reproduced or disclosed to third parties



## CROSS SECTION

LAYER 1 - TOP  
 700um   
 LAYER 2 - GND  
 200um   
 LAYER 3 - DIG  
 700um   
 LAYER 4 - BOT

SILKSCREEN TOP  
 SOLDERMASK TOP  
 CU 35um Fini  
 DIELECTRIC  
 CU 35um (INT.1/2)  
 DIELECTRIC  
 CU 35um (INT.2/2)  
 DIELECTRIC  
 CU 35um Fini  
 SOLDERMASK BOTTOM  
 SILKSCREEN BOTTOM

THICKNESS: 1.6 mm       $\begin{matrix} + & 0.16 \\ - & 0.16 \end{matrix}$

FABRICATION CLASS: 6

MANUF. TOL: UTE C 93703 \$ 6.7  
CURVATURE MAX: 0.1 %  
SOLDERMASK: GREEN PHOTO-IMAGEABLE  
SILKSCREEN: WHITE  
FINISHING: HAL LEAD FREE  
DIELECTRIC: Hi-Temp FR4  
FINAL THICKNESS: 1.6mm +/-0.16  
FINISH COPPER THICKNESS: EXTERNAL: 35u  
INTERNAL: 35u

DRILL CHART: TOP to BOTTOM  
ALL UNITS ARE IN MILLIMETERS

FIGURE	SIZE	PLATED	QTY
+	0.3	PLATED	712
□	0.8	PLATED	8
⊕	1.0	PLATED	64
⊗	1.1	PLATED	21
○	1.3	PLATED	24
◊	2.2	PLATED	14
▲	1.1	NON-PLATED	4
⦶	3.2	NON-PLATED	4

Request INDEX Modifications Drawn Date Approved

---

Design by: STUDIEL-JPC      DATE:02-12-2013      Verified by: FME

VISAS

---

DESIGNATION:Drilling drawing

Scale

Sheet

BOSS COM EMC

CUSTOMER  
240

DRAWING NUMBER  
PC130026

REV  
A

1 / 1