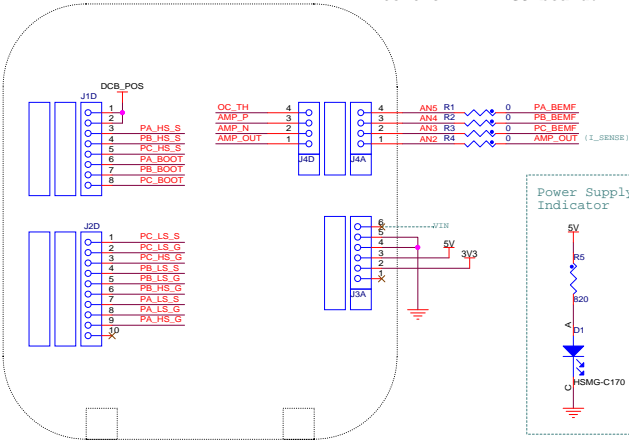
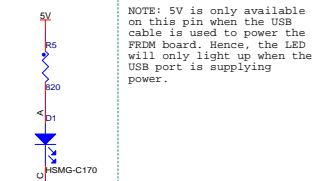


GATE DRIVER INTERFACE

This board attaches to the TOP of the FRDM-GD3000EVB. It does NOT attach directly to the FRDM MCU board.

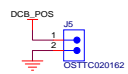


Power Supply Indicator

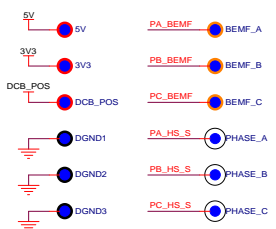


NOTE: 5V is only available on this pin when the USB cable is used to power the FRDM board. Hence, the LED will only light up when the USB port is supplying power.

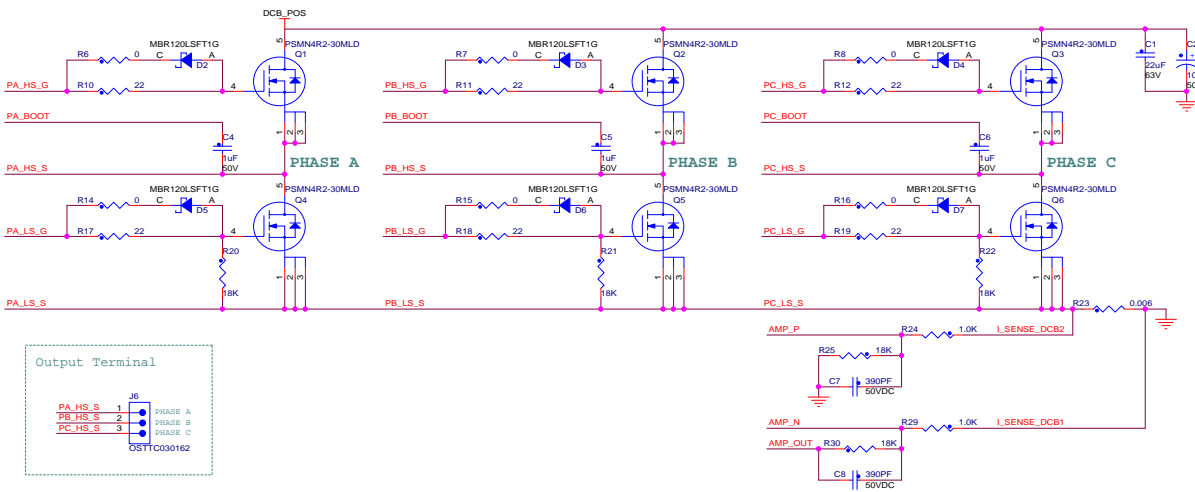
POWER



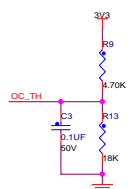
TEST POINTS



POWER STAGES



OVER CURRENT THRESHOLD



BEMF

