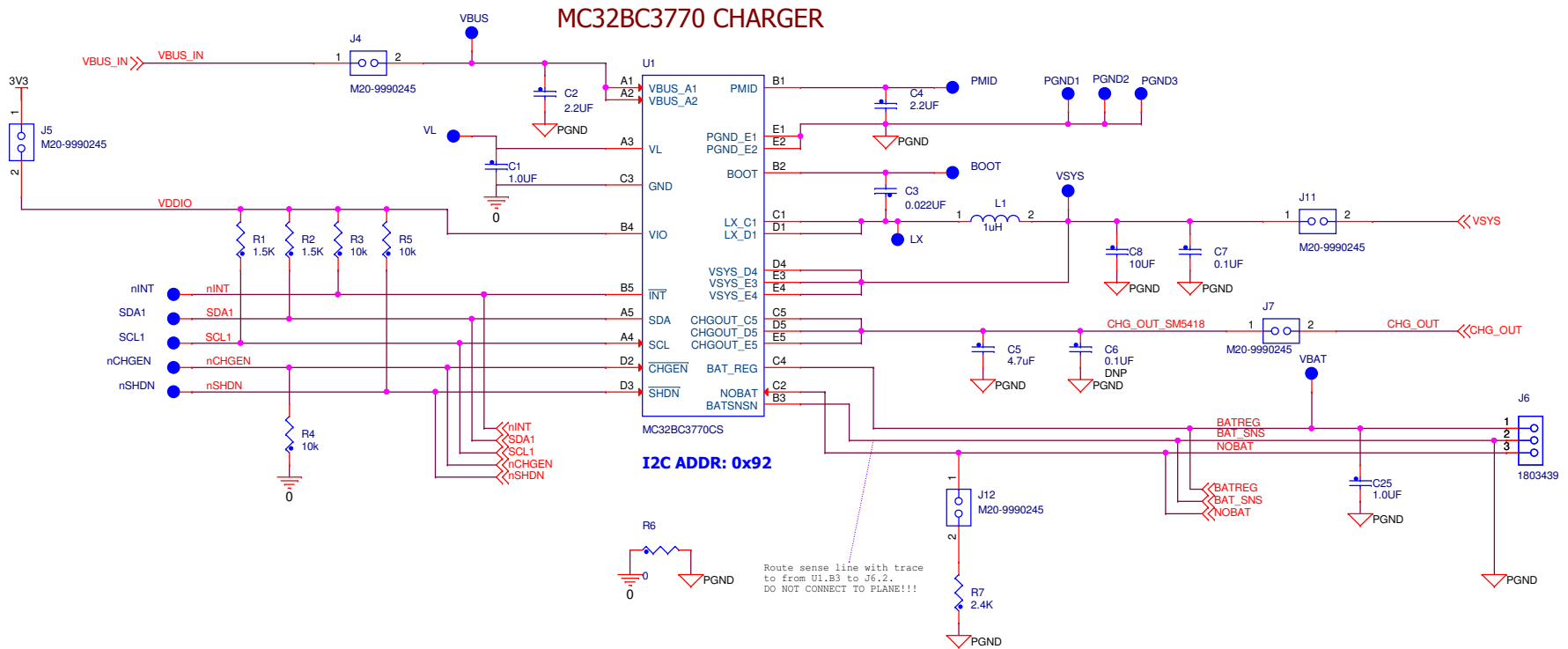


Table of Contents	
0	TITLE, TOC & REV
1	SM5418 CHARGER
2	CURRENT SENSE AMPS
3	ELOAD
4	KL25Z INTERFACE
5	MISCELLANEOUS

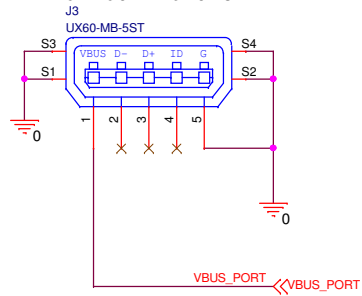
Revisions			
Rev	Description	Date	Approved
X1	Development RELEASE	25 NOV 2014	WILLIAM SMITH
A	RELEASE FOR PROTOTYPE	27 NOV 2014	WILLIAM SMITH
A1	Schematic revision change due wrong Agile 070 Rev. Rev A board used.	03 DEC 2014	WILLIAM SMITH
B	RELEASE FOR PILOT PRODUCTION	07 MAR 2015	WILLIAM SMITH

# FRDM-BC3770-EVB

# MC32BC3770 CHARGER

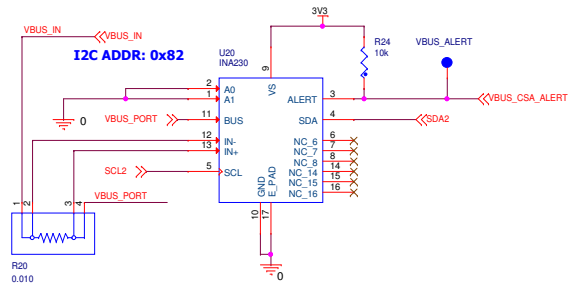


## INPUT CONNECTORS

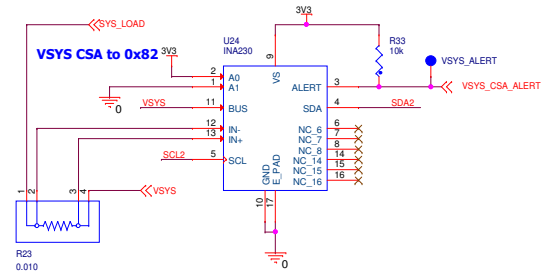


ICAP Classification: FCP: ____ FIUO: X PUBI: ____			
Drawing Title: <b>FRDM-BC3770-EVB</b>			
Page Title: <b>SM5418 CHARGER</b>			
Size B	Document Number	SCH-28660 PDF: SPF28660	Rev B
Date: Monday, March 09, 2015	Sheet 2	of 6	

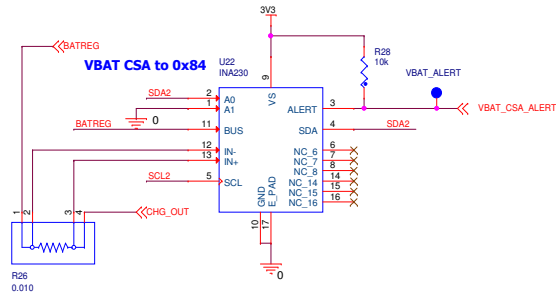
### VBUS CURRENT SENSE AMP

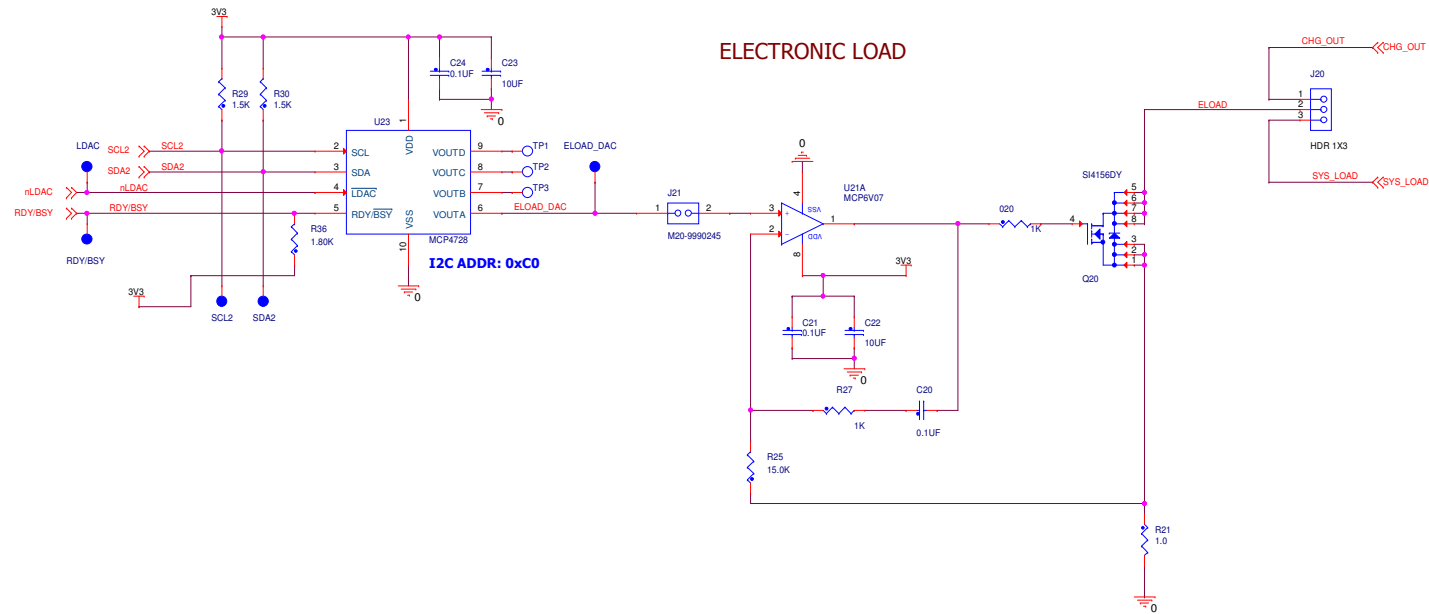


### VSYS CURRENT SENSE AMP



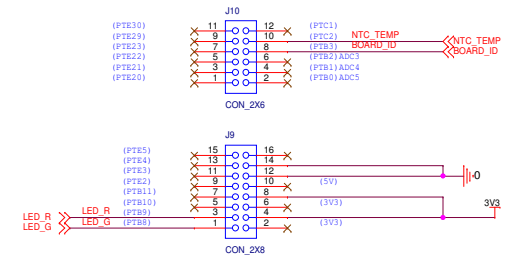
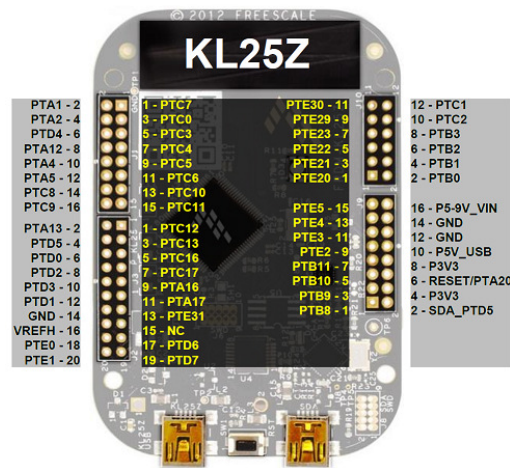
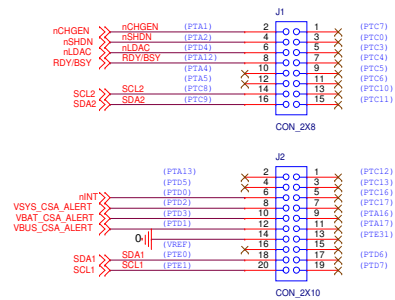
### BATTERY CURRENT SENSE AMP





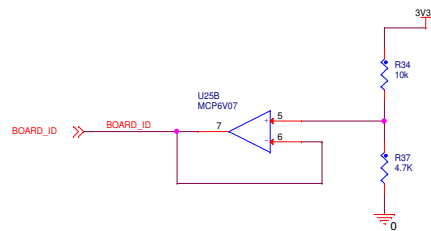
ICAP Classification: FCP: FIOC: X PUGI:			
Drawing Title: <b>FRDM-BC3770-EVB</b>			
Page Title: <b>ELECTRONIC LOAD</b>			
Size C	Document Number SCH-28660 PDF: SPF28660	Rev B	
Date: Monday, March 09, 2015	Sheet 4	of 6	

## KL25Z INTERFACE

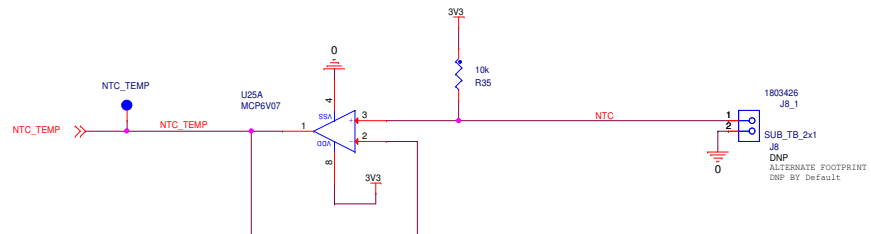


## BOARD ID DETECTOR

PART NUMBER	ID VOLTAGE	RESISTOR
MC32BC3770	0.5V	1.8K 1%
RESERVED	1.0V	4.7K 1%
RESERVED	1.5V	8.45K 1%
RESERVED	2.0V	15.4K 1%



## NTC TEMPERATURE SENSE



## INDICATORS

